



68 Ochil Street

Wishaw, ML2 7QA

Offers Over £87,000

 3
  1
  nul
  C

CLOSING DATE WEDNESDAY 19th JANUARY AT 12 NOON Upload Abode is delighted to present this fantastic 3 bedroom semi-detached home in Wishaw. This home benefits from a large garden and driveway, built-in storage and generous rooms.



Five things the owners love about their home:

1. Spacious rooms.
2. Private parking.
3. Close to shops.
4. Close to public transport.
5. When sunny the sun moves to the back of the house until late evening.

Interior

Entrance to the property is through a uPVC door into the hallway where grey effect floor leads into the kitchen and lounge.

Lounge/Diner:

Bright lounge with dual aspect windows, feature wall with alcove and ample space for dining table.

Kitchen:

Spacious shaker style kitchen with complementary worktops and storage cupboards. The back garden can also be accessed from here.

Bedroom1:

Double bedroom with feature wall and views to the rear of the property.

Bedroom 2:

Double bedroom with storage.

Bedroom 3:

Single bedroom with ample space for bedroom furniture.

Bathroom:



These particulars, whilst believed to be accurate are set out as a general outline only for guidance and do not constitute any part of an offer or contract. Intending purchasers should not rely on them as statements of representation of fact, but must satisfy themselves by inspection or otherwise as to their accuracy. No person in this firm's employment has the authority to make or give any representation or warranty in respect of the property.

Maxim 1 2 Parklands Avenue, Motherwell, ML1 4WQ

Tel: 01698 420884 Email: office@uploadabode.co.uk www.uploadabode.co.uk



Fully tiled bathroom with bath and overhead shower.

Exterior

The front of the property has substantial space for parking several cars with steps leading to the front door. There is also side access to the back garden.

The back of the property has a large patio area with large separate lawn area and paved path leading to the back gate. With large garage in need of modernisation.

Wishaw

Wishaw is a town in North Lanarkshire approximately 15 miles from Glasgow. There are a number of train stations within a short distance including Wishaw, Shieldmuir, Clelland, Hartwood and Shotts.

Wishaw is located close to the A71 with access to Livingston and Edinburgh.

Why choose Upload Abode to sell your home in Wishaw:

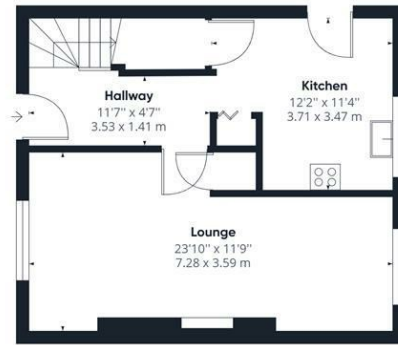
Reputation - We have acquired a fantastic reputation as a trustworthy and honest estate agent and are the most recent winners of Scotland's Estate Agent of The Year at the Herald Property Awards. We pride ourselves on our excellent customer service and have 100's of 5 star reviews.

Innovation - We offer a cutting edge and dynamic approach to marketing your home with professional photography, innovative 3D Virtual Tours and Social Media advertising all helping your property stand out online.

Cost - We are a fixed fee estate agent, offering a fair pricing structure with fantastic value for money.

These particulars, whilst believed to be accurate are set out as a general outline only for guidance and do not constitute any part of an offer or contract. Intending purchasers should not rely on them as statements of representation of fact, but must satisfy themselves by inspection or otherwise as to their accuracy. No person in this firms employment has the authority to make or give any representation or warranty in respect of the property.

Maxim 1 2 Parklands Avenue, Motherwell, ML1 4WQ
Tel: 01698 420884 Email: office@uploadabode.co.uk www.uploadabode.co.uk



Floor 0 Building 1



Floor 1 Building 1

Approximate total area⁽¹⁾

929.80 ft²
86.38 m²

(1) Excluding balconies and terraces

While every attempt has been made to ensure accuracy, all measurements are approximate, not to scale. This floor plan is for illustrative purposes only.

GIRAFFE360

